



OPTIMUS

LOGISTICS CENTER

±184,587 SF DISTRIBUTION CENTER
4150 PATTERSON AVE., PERRIS, CA
www.4150-4160patterson.com



STATE-OF-THE-ART CONSTRUCTION

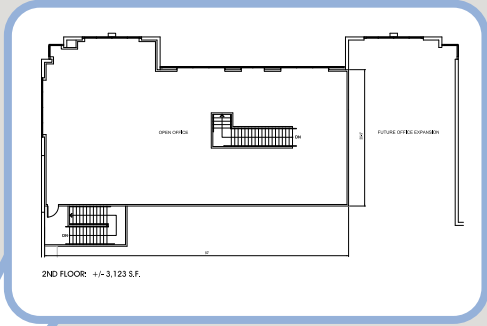
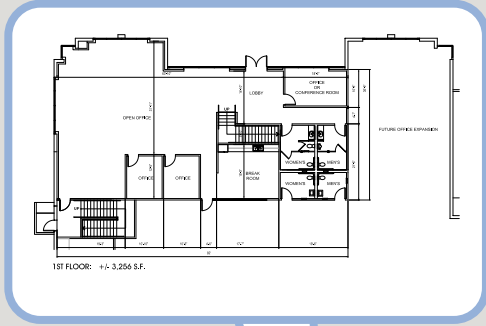


FTZ ELIGIBLE UNDER FTZ #244 | Eliminates / Reduces Tariffs
CLICK FOR MORE INFORMATION



Jones Lang LaSalle Brokerage, Inc. RE License #01856260

PATTERSON AVENUE



↓ FIRST FLOOR OFFICE

↓ SECOND FLOOR OFFICE



*Freeways not to scale



BUILDING SPECIFICATIONS - SUITE A

- ±184,587 SF of Cross Dock Loading
- Part of larger ±406,650 SF building
- ±3,256 SF 1st floor & ±3,123 SF 2nd floor built out offices (±6,379 SF total)
- 32' min. clear height @ 6" behind 1st column
- 39 DH loading positions on 3 sides of the building (9 with levelers, 35,500 lb capacity, EOD remaining)
- 2 GL loading positions
- 130' & 219' Secured concrete truck courts
- ±16 Trailer parking stalls
- ±123 Auto parking stalls
- Scrim foil insulation under the roof deck
- ESFR sprinklers with K-25 heads
- 400 AMPS Power existing, plus additional 1,600 AMPS available
- 2.0% skylights and 0.5% smoke hatches
- 7" floor slab in warehouse, 4,000 PSI & FF55/FL35
- Immediate access to I-215 and five other major freeway systems
- I-215 freeway frontage

OPTIMUS

LOGISTICS CENTER

FEATURING FREEWAY
FRONTAGE AND
VISIBILITY ON I-215



PETER MCWILLIAMS
+1 909 467 6860
Peter.McWilliams@jll.com
LICENSE# 00973278

MIKE MCCRARY
+1 909 467 6885
Mike.McCrary@jll.com
LICENSE# 01054055

SHARON WORTMANN
+1 909 467 6861
Sharon.Wortmann@jll.com
LICENSE# 01420298

Although information has been obtained from sources deemed reliable, neither Owner nor JLL makes any guarantees, warranties or representations, express or implied, as to the completeness or accuracy as to the information contained herein. Any projections, opinions, assumptions or estimates used are for example only. There may be differences between projected and actual results, and those differences may be material. The Property may be withdrawn without notice. Neither Owner nor JLL accepts any liability for any loss or damage suffered by any party resulting from reliance on this information. If the recipient of this information has signed a confidentiality agreement regarding this matter, this information is subject to the terms of that agreement.
©2026 Jones Lang LaSalle IP, Inc. All rights reserved.